

2017

# Esri Senior Executive Summit





# PURPOSE

Helping You Succeed

Sharing

Creating

Learning

Connecting

Relationships

Applying

**THE  
SCIENCE  
OF  
WHERE**

Business Value

Concepts

Applications

Technology Trends

Implementation Patterns





# Esri Serving Our Users

Advancing GIS and  
The Science of Where

Products

Services

Investing in the Future (R&D 31%+)

Support

Partners

Education

Strong and Growing

Engineering and Science Focus

Promoting Spatial Literacy

Supporting Employees

*Working to Make a Difference*



# Esri Users



Over 1 Million Users

## Organizations

**1,200** National Government Agencies

**11,500** States & Regional Agencies

**30,800** Cities & Local Governments

**32,000** Businesses

**8,500** Utilities

**12,600** NGOs

**11,000** Colleges & Universities



# GIS Is Transforming our World

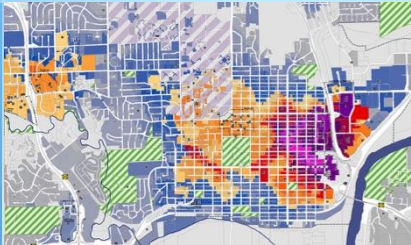


*Helping Organizations Do Their Work Better  
Delivering Business Value Everywhere*



# GIS

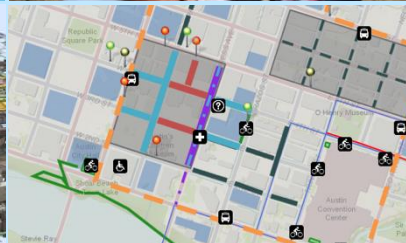
## Is Delivering Value



land-use  
planning



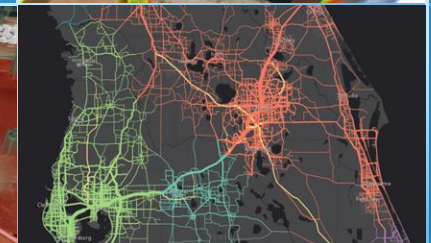
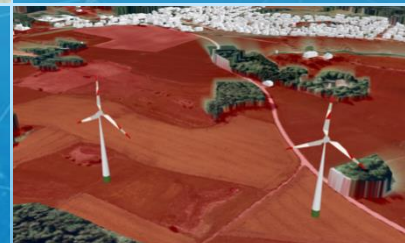
urban  
design



transportation



renewable  
energy

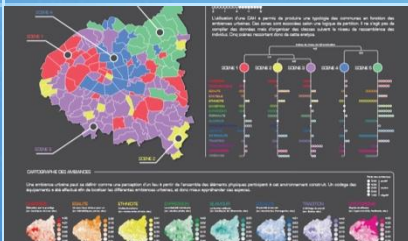
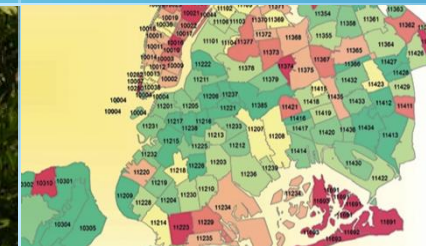




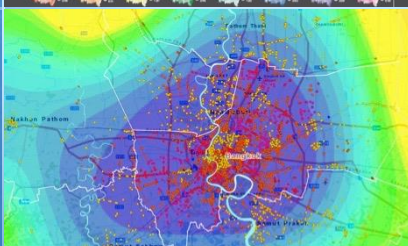
# GIS

## Is Delivering Value

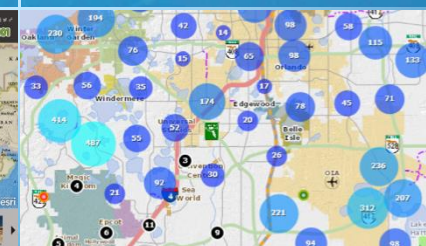
human health



economic  
development



education

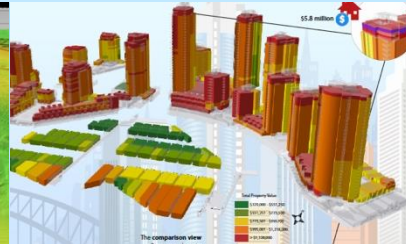
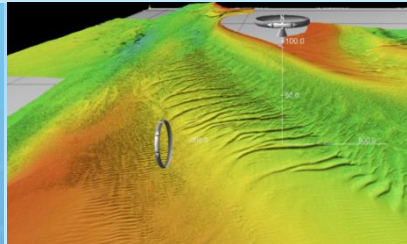




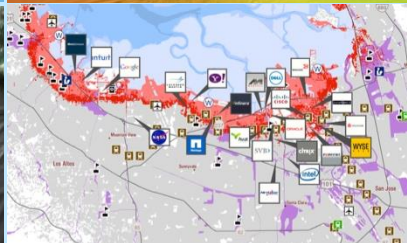
# GIS

## Is Delivering Value

environmental  
conservation



utilities



business  
management



public  
safety



facility  
management



land  
information



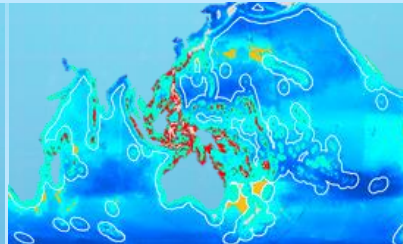


# GIS

## Is Delivering Value

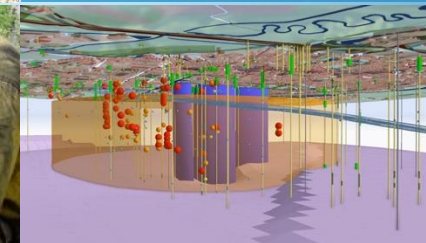
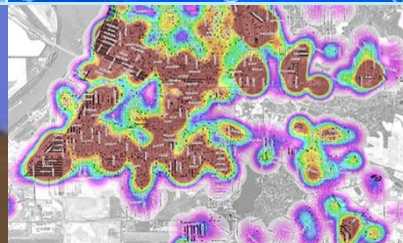


marine  
management

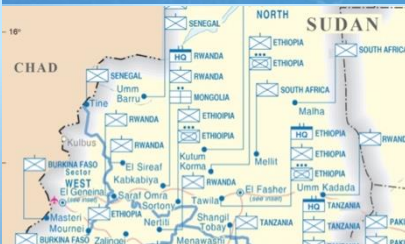


natural  
resources

national  
security



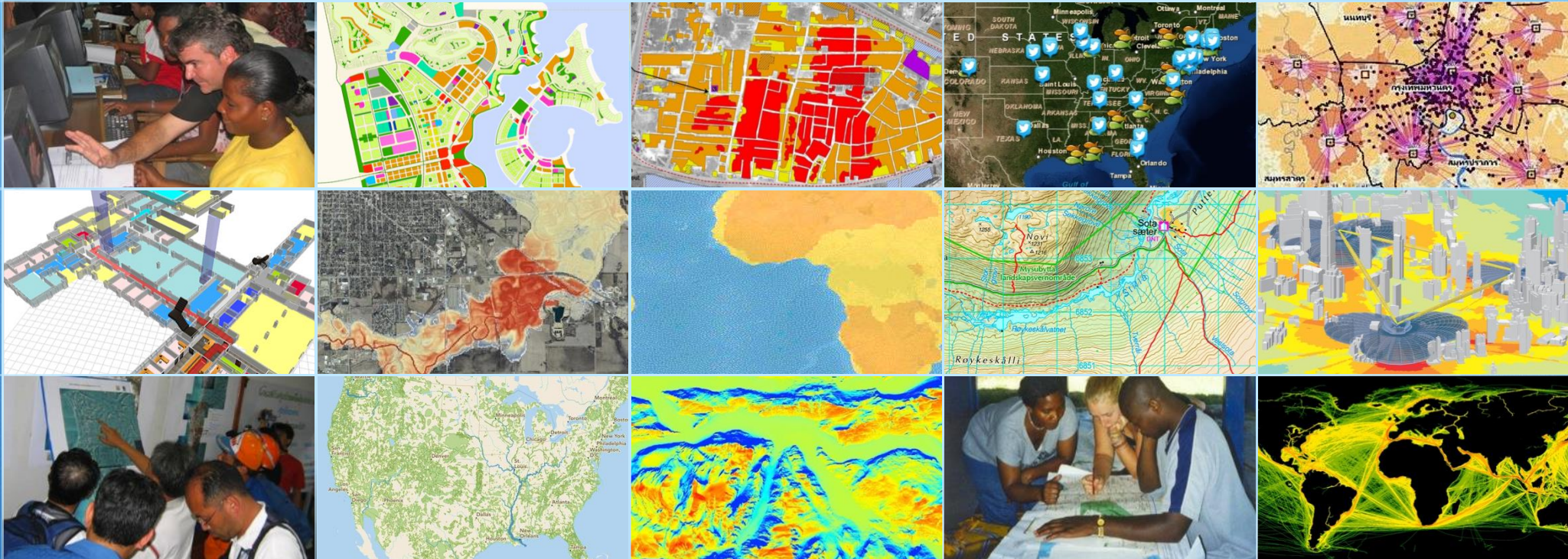
disaster  
response





# GIS

## Is Delivering Value



*Improving Efficiency, Communication, and Decision Making*



# What Is a GIS?

A System for Managing and Applying Geographic Information



Custom Apps



# GIS Is a Platform

Integrating People,  
Processes, Things,  
and Data About Them

System of  
Engagement

Using the Power of Where  
to Integrate Everything

System of  
Record

System of  
Insight





# GIS Is Advancing Rapidly

Integrating and Leveraging Many Innovations

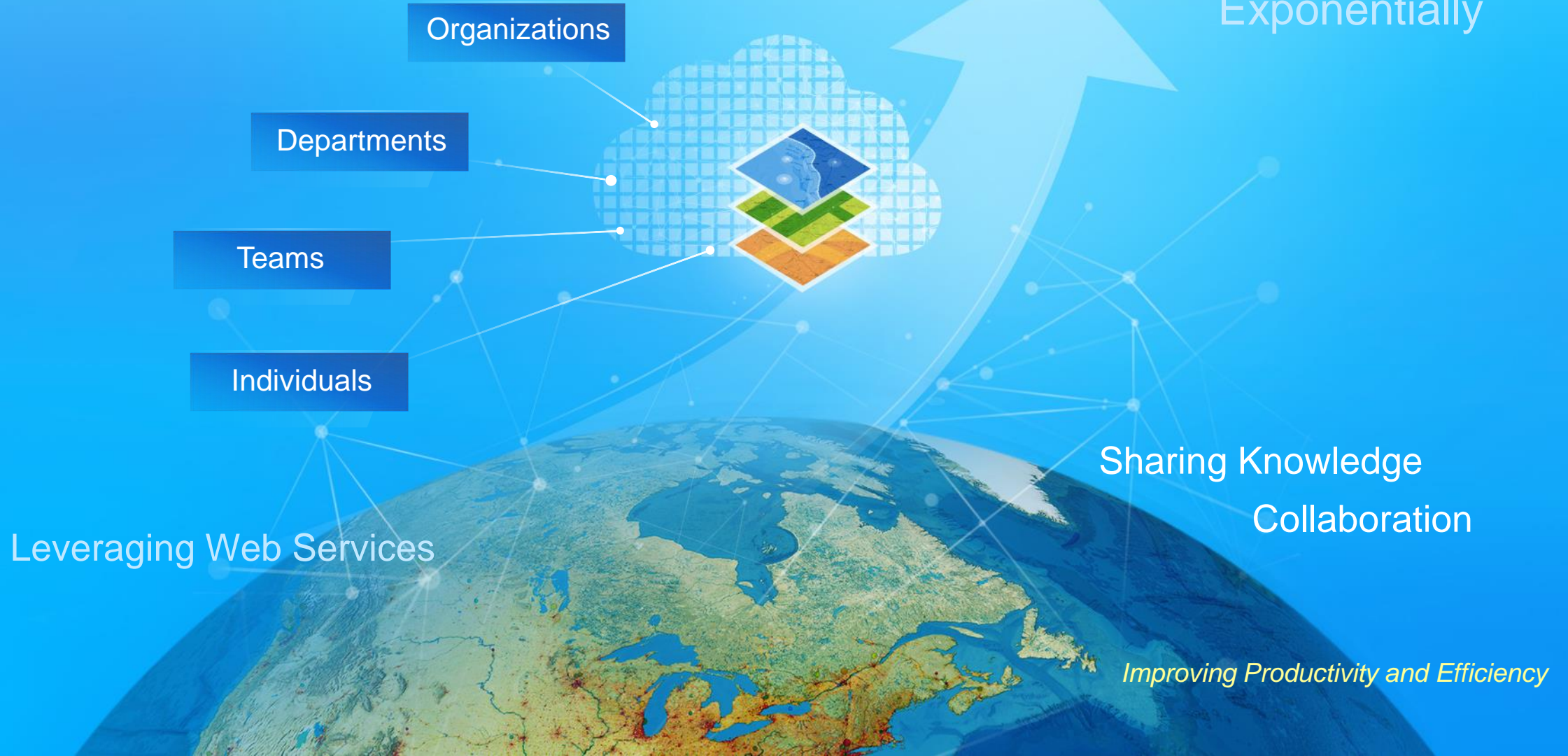




# Web GIS Is the Modern GIS Pattern

Helping Everyone Do Their Work Better

Growing  
Exponentially





# Web GIS Is

Expanding the Impact of GIS Across the Organization



*Providing Everyone the Geographic Advantage*



# GIS

Is an Enterprise Business Platform

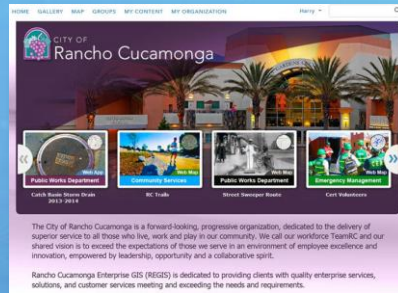


*Providing for Faster and Better Decision Making . . .  
... and More Agile Organizations*



# GIS

## Is an Enterprise Platform for Government



City Service - California



THE UN



Columbus, Ohio



Geology and Minerals, Peru



Abu Dhabi



Land Information - Wisconsin



Los Angeles

USDA

Manaus, Brazil



NOAA

Improving Productivity, Decision Making, and Transparency



# Web GIS

Connects Individuals, Organizations, and Communities

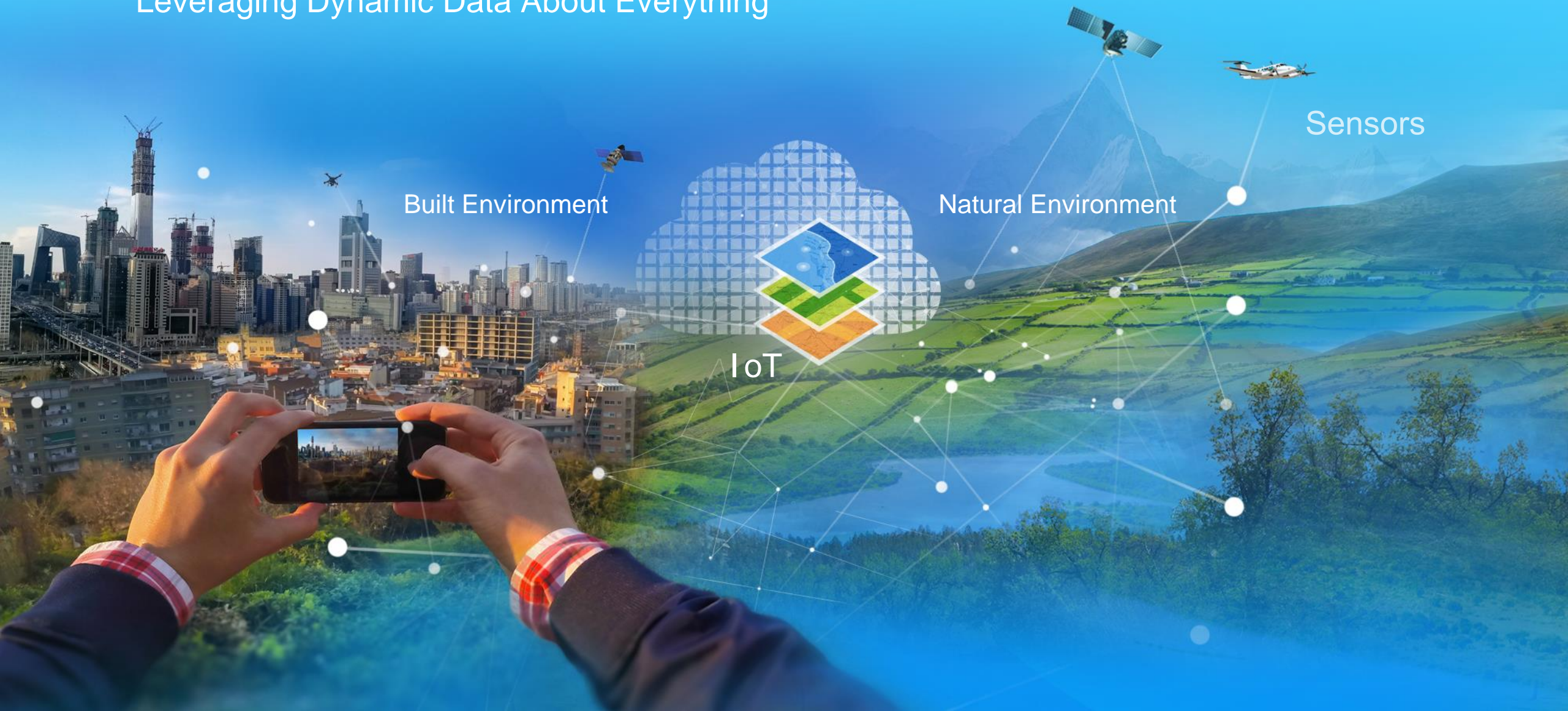
*System of Systems*





# GIS Integrates Real-Time Information

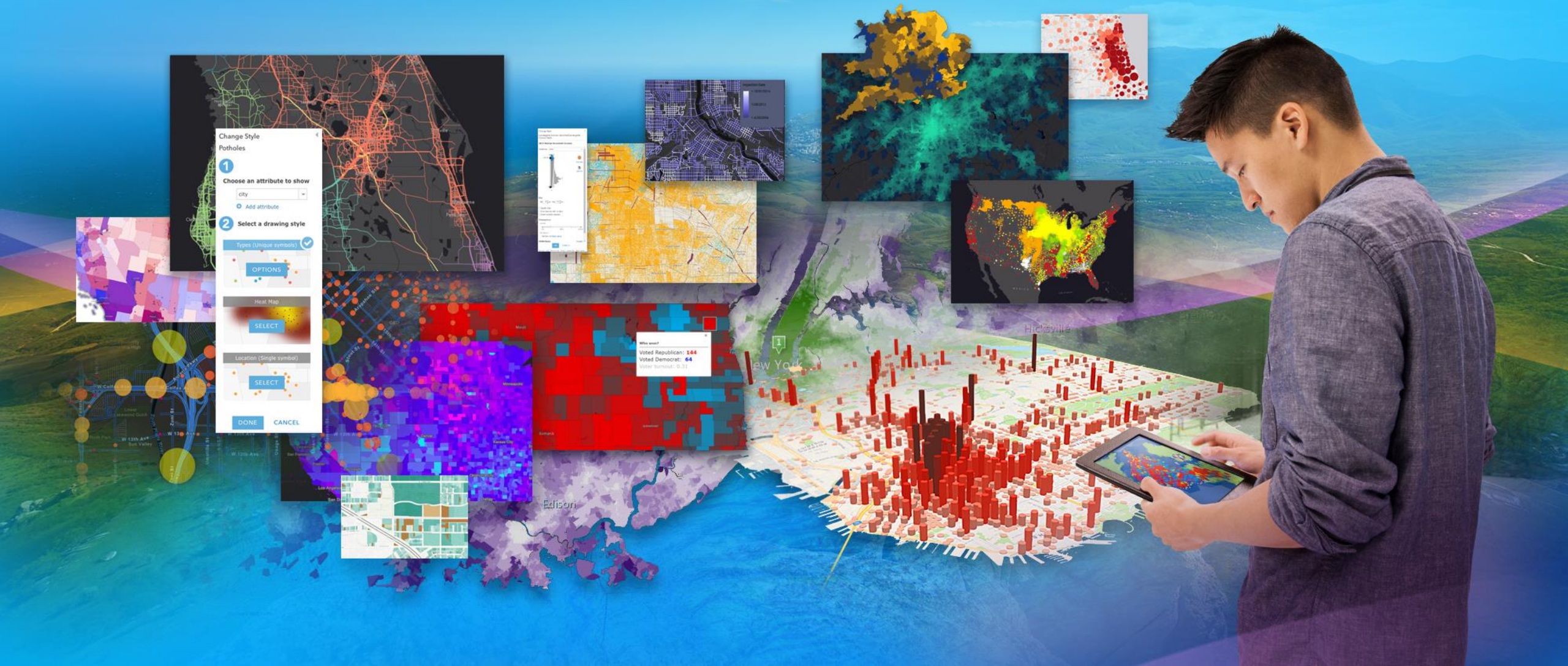
Leveraging Dynamic Data About Everything





# GIS Supports Smart Mapping

# Creating Beautiful Maps



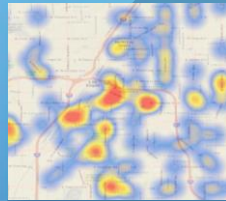


# GIS Supports Spatial Analytics

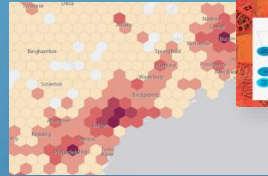
Powerful Tools for Analyzing  
Patterns and Relationships in Data

Analysis and Modeling

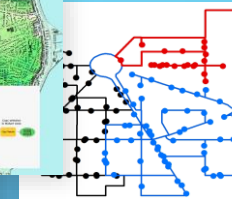
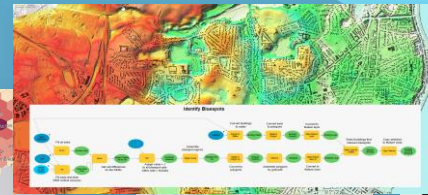
Density



Dynamic  
Aggregation

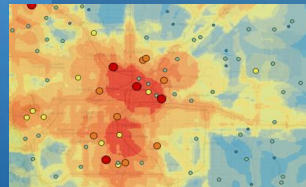


Model Builder



Optimized VRP  
Clustering

EBK Regression  
Prediction



Optimum Site  
Selection

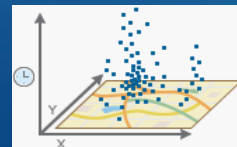


Network  
Analysis



Suitability Modeling

3D Analysis



4D Pattern  
Mining



Geocoding

*Providing Insights and Understanding*



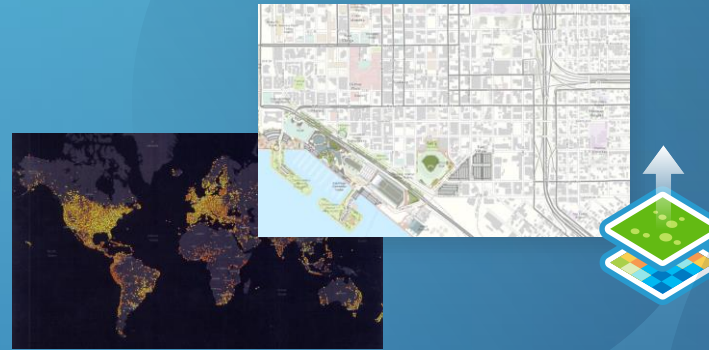
# GIS Supports Location Analytics

## Business Decision Making

### Exploratory Spatial Analysis (Spatial BI)

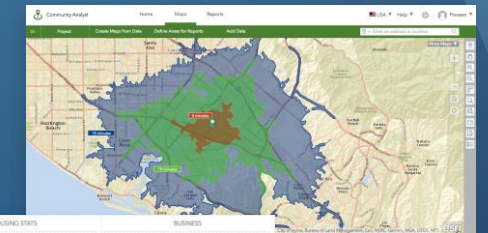


### Geocoding & Geoenrichment

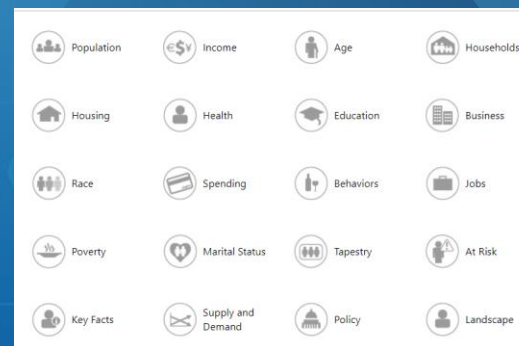


### Business Decision Support

### Demographic Analysis



### Focused Content



### Location assessment



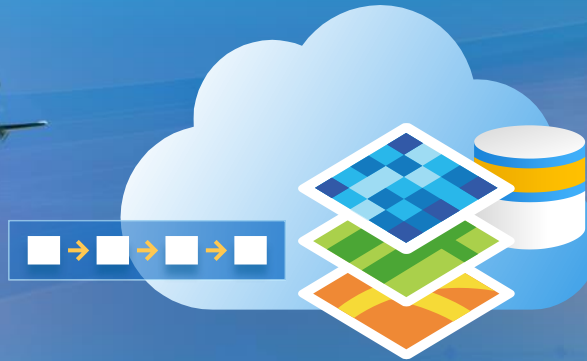
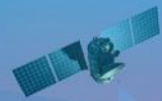
### Infographics

For Analysts and Data Scientists



# GIS Is a Complete Imagery Platform

Providing Content, Processing,  
Analysis, and Management



Landsat

High-Resolution Satellites

Drones

Small Satellites

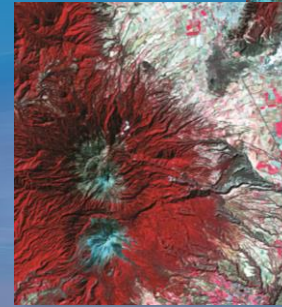
Weather

Aerial Photos

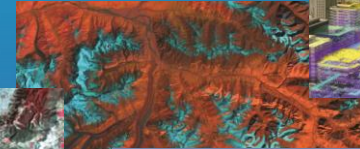
Radar

Many  
Sources

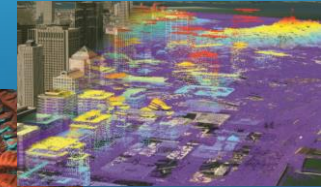
Volcano  
Monitoring



Vegetation Health



Urban Lidar

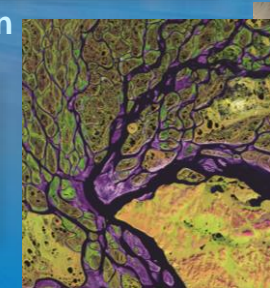


Surveillance

3D Visualization



Storm  
Tracking



Hydrography



Agriculture

Powerful  
Analytics



# GIS Supports Field Operations

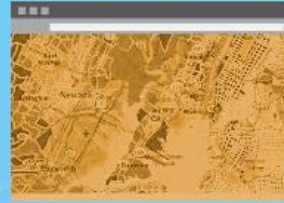
Taking GIS Beyond the Office





# GIS Supports Apps That Empower Everyone

Easy-to-Use Apps That Work On Any Device, Anywhere, Anytime



Apps that work

On any device

Field

Office

Public





# GIS Enables Community Engagement

## Organizing and Managing Community Interactions

Citizens Need Information . . .  
. . . Leaders Need Input





# Our Work

Creating Useful Technology and Supporting Our Users

ArcGIS

Spatial Analysis

Content

Mapping

3D

Solutions

Data Management

Editing

Usability

Security

Developers

Open Data

Performance

Identity

Interoperability

Geodesign

Imagery

Standards

Administration

Enterprise Integration

Real Time

Big Data

Cloud

Quality





# ArcGIS | A Complete GIS Platform

A System for Managing and  
Applying Geographic Information

Services Based

Deployable On-Premises  
and in the Cloud

Distributed



Open

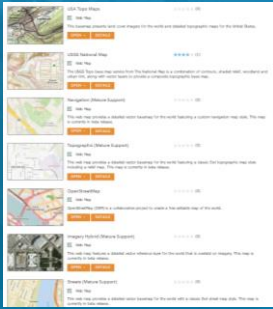
Available as SaaS

*Supporting Individuals, Teams, and Organizations*

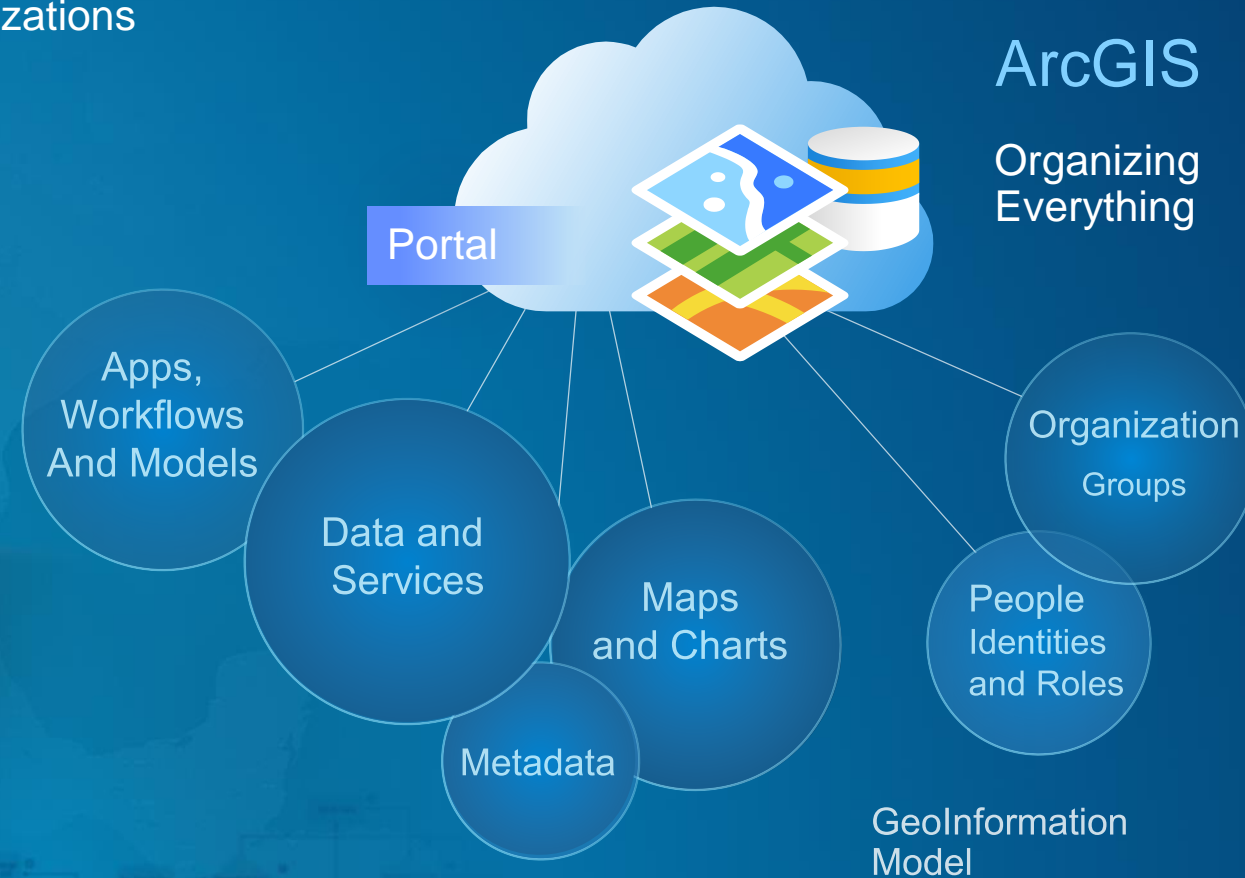


# ArcGIS | Organizes and Manages All Aspects of a GIS

Data, Information Products, Apps, Models . . .  
. . . and People and Their Organizations



Integrated User  
Experience





# ArcGIS | Supports Multiple Implementation Patterns

Desktop



Server



Enterprise/Online



Distributed

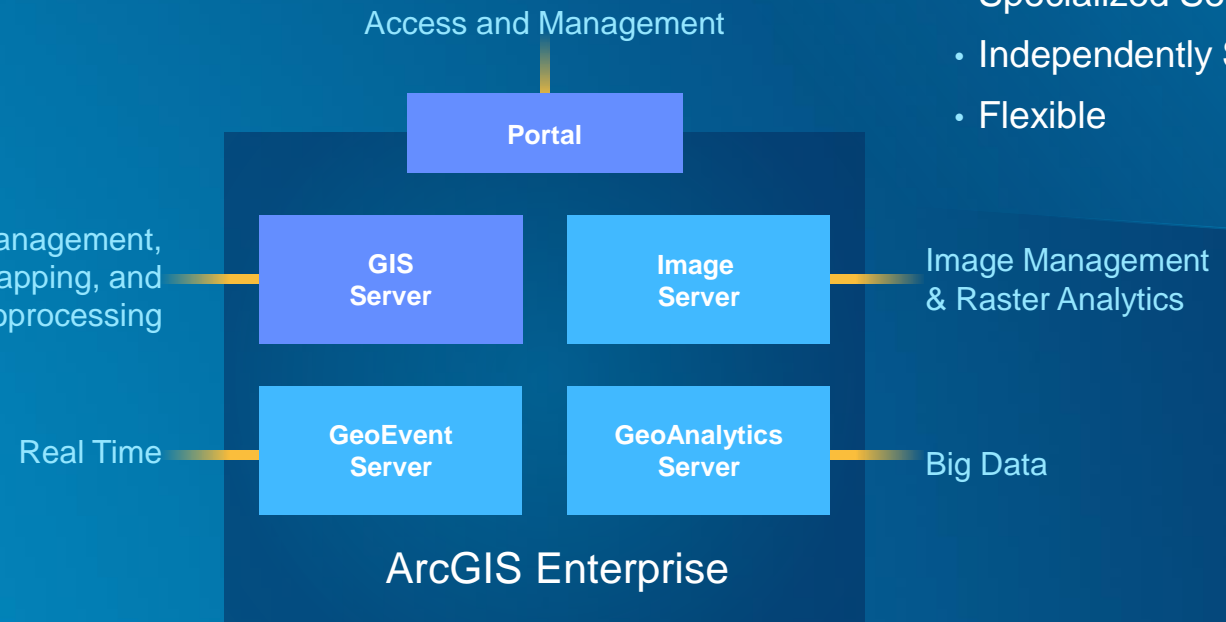


System of Systems

*Web Services Are Interconnecting Everything*



# ArcGIS Enterprise | Next Generation Server Platform (10.5)



## Modular and Massively Scalable

- Specialized Servers
- Independently Scalable
- Flexible

Enterprise Data Management, Analysis, and Mapping

... Enabling Organizations to Take GIS to Scale



# ArcGIS | An Open, Interoperable, and Standards-Compliant Platform



Any System

## Open Standards and Formats

WMS GML WCS KML WFS  
IFC SQL **WWW**  
OPeNDAP SLD SOAP Web Scene (I3S)  
LERC JSON LAS WMTS  
REST WaterML INSPIRE CSW WPS  
NetCDF Shapefiles  
**ISO** GeoPackage  
OneGeology  
CityGML

**OGC**  
Principal Member

## Product Integration

SQL Server  
Adobe Creative Cloud SharePoint  
MS Office Azure AutoCAD  
AWS Netezza Teradata  
IBM Cognos SAP HANA  
Oracle

## Open Software

Open Data Access  
Open APIs & SDKs  
Extensible Architecture  
Embeddable Components  
Open-Source Contributions (500+)  
Open-Source Integration

... Successfully Integrated into Thousands of Systems



# Implementing GIS

## Requires More Than Technology

- Vision, Leadership, and Involvement
- Strong Business Case
  - Value and Impact
  - Cost, IT, Risk Assessment
  - Realistic Timeline
- Ongoing Governance  
(Business, IT, Security, and GIS)
- Good People



... and a Culture of Sharing and Engagement



2017

# Esri Senior Executive Summit

